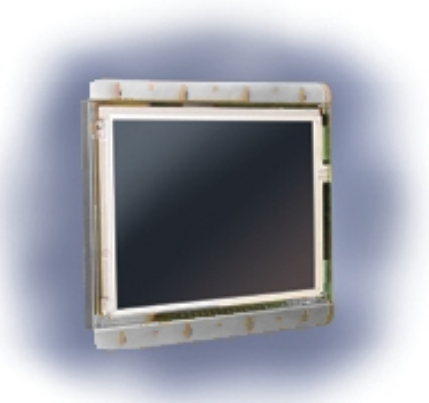


## NXS12T Specifications



The NXS12T is an open-frame, high performance, low-power computing platform that integrates an X86 compatible processing core with a LCD display, touch sensor and fanless thermal management to form a highly reliable, quiet and compact embedded solution.



Integrated Device	Specifications:
Main Board	<ul style="list-style-type: none"> <li>• 1.2 GHz X86 Processor</li> <li>• Phoenix Bios</li> <li>• Combined Keyboard/Mouse Port</li> <li>• Five USB 1.1/2.0 ports</li> <li>• 10/100 Base T Ethernet</li> <li>• Four RS-232 Serial ports; (2) with Handshaking</li> <li>• Beeper</li> <li>• PCMCIA/CardBus</li> <li>• (8) General Purpose Input Pins, 0 – 3V or Contact Closure to System common</li> <li>• (8) Internal General Purpose Output Pins, (6) 0 – 5V +- 20 mA, (2) open drain 150mA</li> <li>• Power Button (for soft shutdown of system)</li> <li>• Integrated resistive touch controller</li> <li>• Integrated Video</li> <li>• Two IDE ports</li> <li>• MS Windows / Linux compatible</li> </ul>
Memory	<ul style="list-style-type: none"> <li>• Single Slot 184 Pin PC2700, 256 MB DDR RAM (Standard)</li> <li>• Supports up to 1GB</li> </ul>
Storage	<ul style="list-style-type: none"> <li>• 2.5" Hard Drive, Ultra ATA/100, 5400RPM, 100MB/Sec., 40GB (Standard)</li> <li>• Other Hard Drive and Solid State mass storage options available</li> </ul>
Video Controller	<ul style="list-style-type: none"> <li>• Integrated 18/24-bit 1600x1200 resolution 32MB video RAM</li> </ul>
Display	<ul style="list-style-type: none"> <li>• 12.1" CCFL, SVGA TFT LCD Panel supporting up to 800x600 (Standard)</li> <li>• 12.1" CCFL, XGA TFT LCD Panel supporting up to 1024x768 (Optional)</li> <li>• 15" CCFL, XGA TFT LCD Panel supporting up to 1024x768 (Optional)</li> </ul>
Audio	<ul style="list-style-type: none"> <li>• AC97 with integrated stereo 10W amplifier</li> <li>• Line-out</li> </ul>
Touch	<ul style="list-style-type: none"> <li>• Resistive touch sensor (Standard)</li> <li>• Capacitive (Optional)</li> <li>• SAW (Optional)</li> </ul>
Power Supply	<ul style="list-style-type: none"> <li>• 9 to 24 VDC Input (35W max.)</li> </ul>
Thermal Management	<ul style="list-style-type: none"> <li>• Fanless Heat dissipater (15W)</li> </ul>
Compliance	<ul style="list-style-type: none"> <li>• FCC Part 15 Part A</li> <li>• ESD/Immunity Compliance</li> </ul>
Weight	<ul style="list-style-type: none"> <li>• TBD</li> </ul>
Enclosure	<ul style="list-style-type: none"> <li>• Light weight, rugged Aluminum design</li> </ul>